

SMART MONSTER™

Smart Pressure Gauge for Hose Monster products

ABOUT YOUR SMART MONSTER™

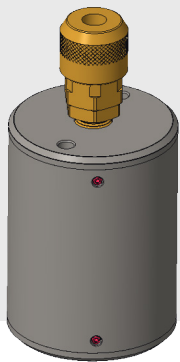
The Smart Monster™ is a smart, wireless pressure sensor™ for use with Hose Monster products. To begin, download and install the Smart Monster™ mobile application available for both iOS and Android devices.

When you first launch the Smart Monster™ mobile application, you will be prompted to allow the application to use Bluetooth

communication, and on Android, to also access location data. These are required for the application to communicate with the Smart Monster™ devices.

The mobile application will automatically discover any Smart Monster™ within communication range (approximately 25 feet), and begin displaying the pressure reading right away.

1/4" NPT Pressure Fitting



Wireless Charging Cap



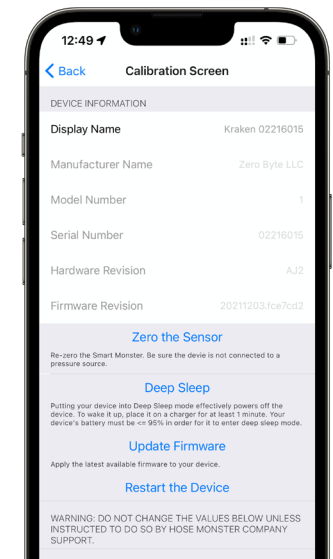
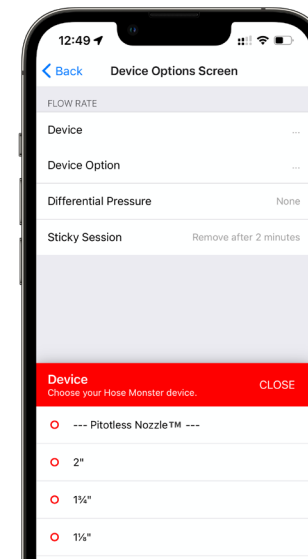
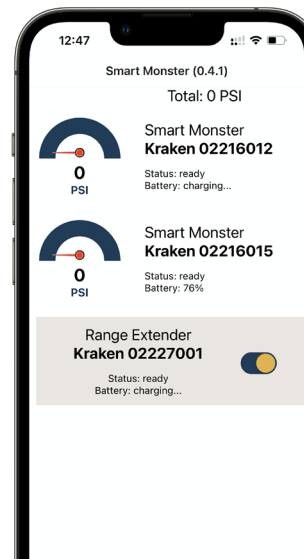
To operate, simply connect the Smart Monster™ to any pressure source. Your Smart Monster™ has been supplied with a 1/4" female quick disconnect fitting, which you can replace with any 1/4" NPT fitting. Pressure readings will automatically be shown in the mobile application.

Your Smart Monster™ has wireless charging capabilities. To charge the battery, simply place it on a wireless charging pad with the wireless charge cap facing down (the pressure fitting pointing up). The Smart Monster™ should reach a full charge within 4–8 hours. It is recommended to charge it nightly, though you should get several days' use out of a full charge.

Tap on any device in the list to switch to its Device Options screen. On the Device Options screen, you can set the Hose Monster product it is connected to, which will switch the reading shown from PSI to Gallons Per Minute (GPM). Return to the Device Options screen and clear your selection to return to PSI values.

Long-press on a device to open its device calibration and firmware update screen. Unless you are instructed to do so by 'The Hose Monster company', do not modify the device's calibration values. Doing so will invalidate its certification and result in unreliable readings.

Tap "Update Firmware" to check and install any updates to your Smart Monster™ device.



FCC COMPLIANCE

This device complies with Part 15 of the FCC Rules. Operation is subject to the following two conditions: (1) This device may not cause harmful interference, and (2) this device must accept any interference received, including interference that may cause undesired operation.


CAUTION: The grantee is not responsible for any changes or modifications not expressly approved by the party responsible for compliance. Such modifications could void the user's authority to operate the equipment. **NOTE:** This equipment has been tested and found to comply with the limits for a Class B digital device, pursuant to Part 15 of the FCC Rules. These limits are designed to provide reasonable protection against harmful interference in a residential installation. This equipment generates, uses, and can radiate radio frequency energy, and if not installed and used in accordance with the instructions, may cause harmful interference to radio communications. However, there is no guarantee that interference

will not occur in a particular installation. If this equipment does cause harmful interference to radio or television reception, which can be determined by turning the equipment off and on, the user is encouraged to try to correct the interference by one or more of the following measures:


- Reorient or relocate the receiving antenna.
- Increase the separation between the equipment and receiver.
- Connect the equipment into an outlet on a circuit different from that to which the receiver is connected.
- Consult the dealer or an experienced radio/TV technician for help.

This equipment has been tested and meets applicable limits for radio frequency (RF) exposure. This transmitter must not be co-located or operating in conjunction with any other antenna or transmitter.

HOSE MONSTER
COMPANY

 (888) 202-9987

 [hosemonster.com](https://www.hosemonster.com)

 (847) 434-0073

 1330 Ensell Rd
Lake Zurich, IL 60047

 service@hosemonster.com