

RANGE EXTENDER

Long-range communication bridge for Smart Monster pressure sensors

ABOUT YOUR RANGE EXTENDER

The Range Extender is a long-range communication bridge for use with Smart Monster devices. To begin, download and install the Smart Monster mobile application available for both iOS and Android devices.

When you first launch the Smart Monster mobile application, you will be prompted to allow the application to use Bluetooth

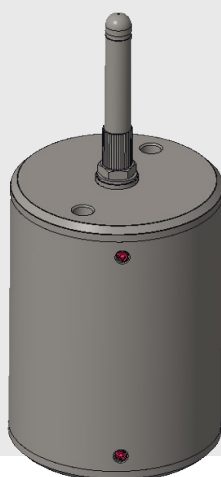
communication, and on Android, to also access location data. These are required for the application to communicate with the Smart Monster devices.

The mobile application will automatically discover any Range Extender within communication range (approximately 25 feet), and begin displaying the pressure reading right away.

Wireless Charging Cap



Communication Antenna

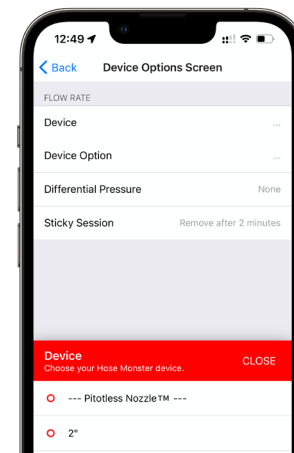
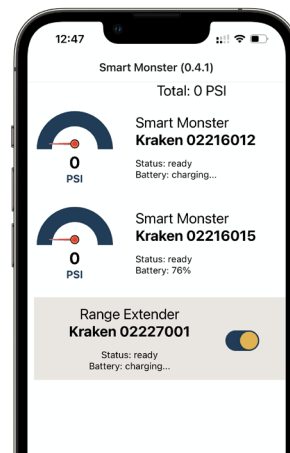


Your Range Extender has an antenna on one end for long-range communication. The antenna may be removed for storage, but should be replaced for best operation before using.

The Range Extender uses 915 MHz ISM band communication to relay readings from your Smart Monster devices over a mesh network, allowing you to use your Smart Monster from distances greater than 25 feet, as well as through obstructions such as interior and exterior building walls.

Your Range Extender has wireless charging capabilities. To charge the battery, simply place it on a wireless charging pad with the wireless charge cap facing down (the antenna pointing up). The Range Extender should reach a full charge within 4–8 hours. It is recommended to charge it nightly, though you should get several days' use out of a full charge.

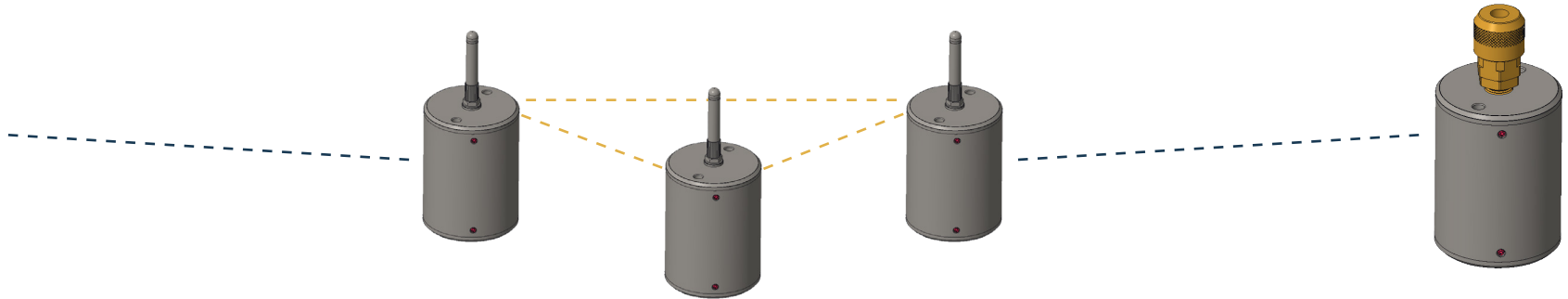
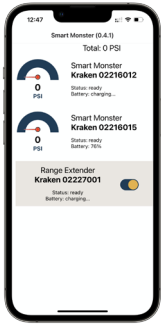
A Smart Monster that is out of Bluetooth range of your mobile phone may be used through Range Extenders. Place one near your Smart Monster device, and one near your smartphone. To span greater distances, you may place additional Range Extenders at intermediate locations between the two. Smart Monsters that are only discoverable through the Range Extender network will appear with a status of “remote”.



TYPICAL DEPLOYMENT

--- ISM Band Radio

--- Bluetooth Low Energy



FCC COMPLIANCE

This device complies with Part 15 of the FCC Rules. Operation is subject to the following two conditions: (1) This device may not cause harmful interference, and (2) this device must accept any interference received, including interference that may cause undesired operation.

CAUTION: The grantee is not responsible for any changes or modifications not expressly approved by the party responsible for compliance. Such modifications could void the user's authority to operate the equipment. **NOTE:** This equipment has been tested and found to comply with the limits for a Class B digital device, pursuant to Part 15 of the FCC Rules. These limits are designed to provide reasonable protection against harmful interference in a residential installation. This equipment generates, uses, and can radiate radio frequency energy, and if not installed and used in accordance with the instructions, may cause harmful interference to radio communications. However, there is no guarantee that interference


will not occur in a particular installation. If this equipment does cause harmful interference to radio or television reception, which can be determined by turning the equipment off and on, the user is encouraged to try to correct the interference by one or more of the following measures:

- Reorient or relocate the receiving antenna.
- Increase the separation between the equipment and receiver.
- Connect the equipment into an outlet on a circuit different from that to which the receiver is connected.
- Consult the dealer or an experienced radio/TV technician for help.

This equipment has been tested and meets applicable limits for radio frequency (RF) exposure. This transmitter must not be co-located or operating in conjunction with any other antenna or transmitter.


HOSE MONSTER

COMPANY

 (888) 202-9987

 [hosemonster.com](https://www.hosemonster.com)

 (847) 434-0073

 1330 Ensell Rd
Lake Zurich, IL 60047

 service@hosemonster.com